



Welcome to

HOSTEL INFORMATION

Manager Daniel Fitzgerald
Reception Hours 8am - 5pm
Bed Linen All bed linen is provided. Please place in linen bins at reception when you check out. Sleeping bags are not permitted in YHA hostels.

Check Out 10.00am If checking out prior to 7am, see reception the night before to arrange return of key deposit.

Extending Your Stay You are welcome to extend your stay depending on availability. Please check and pay at reception before 9.00am

Luggage Storage See reception.

Alcohol & Smoking Alcohol is tolerated in moderation in communal areas only. All YHA hostels in Australia are smoke free. Please smoke in the designated smoking areas.

Emergency Procedures Can be found on the back of your bedroom door. Please read them carefully and follow the instructions of a staff member in the event of an evacuation.

Security Please close and lock your bedroom door when leaving the room. Management will not take responsibility for stolen possessions.

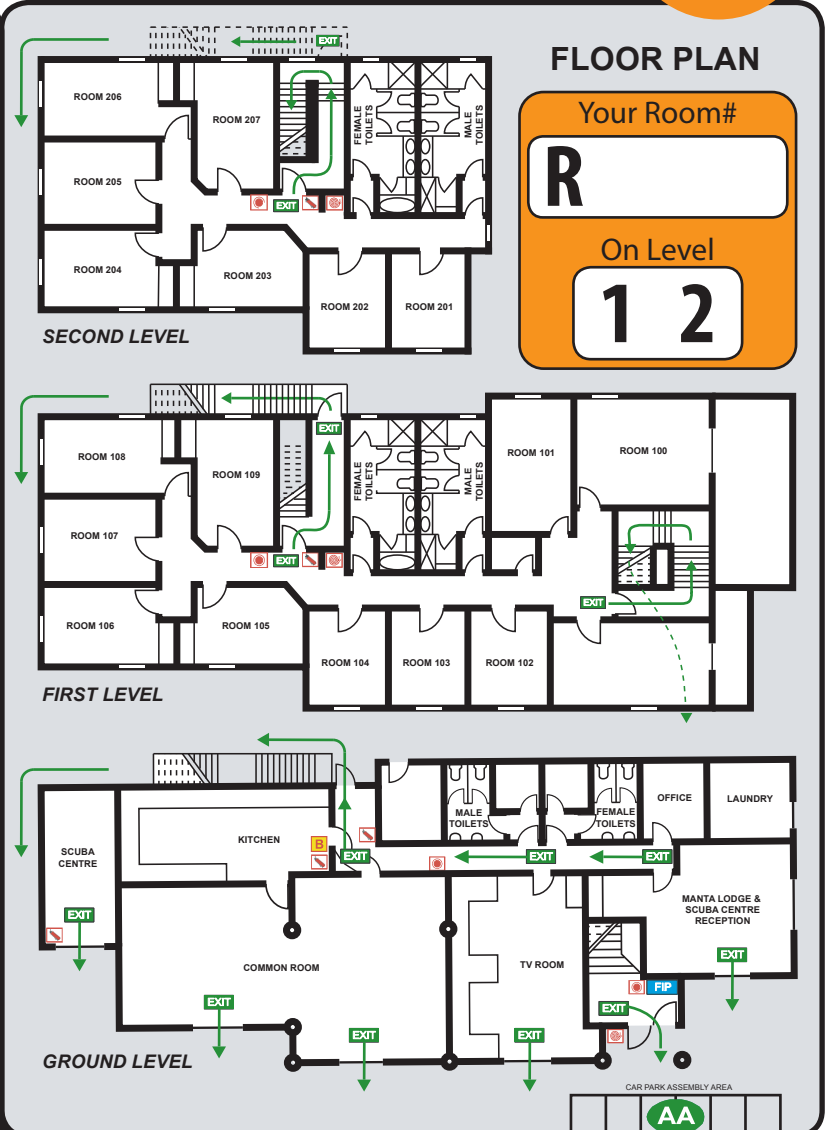
Laundry Washers and dryers are located in the laundry at the front of the hostel. Washing powder can be purchased from reception.

Telephones A pay phone is located on the footpath at the front of the hostel.

Internet & Wi-Fi Computer facilities and the purchase of Wi-Fi is available from reception.

Kitchen The kitchen is available from 7am - 10pm. Store items on the shelves with your room number. Please be considerate of others and leave the kitchen clean and tidy.

All communal areas (except laundry and kitchen) can be accessed 24hrs with room keys.



FLOOR PLAN

Your Room#

R

On Level

1 2



PLEASE REMEMBER TO ALWAYS
TURN LIGHTS OFF WHEN
LEAVING THE ROOM TO HELP SAVE
THE ENVIRONMENT

FIRE ALARM NOTICE - UNWANTED ALARMS!

Please refrain from using aerosol sprays and smoking in bedrooms and corridors. Keep bathroom doors closed when in use. Accidental triggering of the fire alarm attracts fines up to \$1000 and YHA may seek to recover costs.

Book your next YHA at reception now!

eNights

Manta Lodge YHA and Scuba Centre

132 Dickson Way, Point Lookout, Queensland 4183

Ph: 07 3409 8888

info@mantalodge.com.au www.mantalodge.com.au

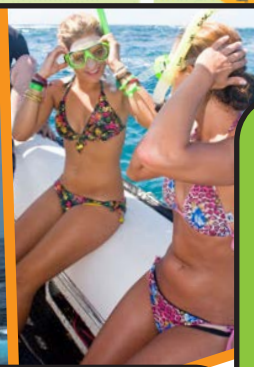




MANTA
 LODGE & SCUBA CENTRE
 STRADBROKE ISLAND

POINT LOOKOUT 4183

Facebook
 LIKE US



EATING OUT GUIDE

- 1** Point Lookout Roadhouse – Open 7 days
 Home of the famous Straddie Burger!
 All day from 6am – 6.30pm.
- 2** Sisco's Steak House – Open 7 days
 Char-grill steaks.
 Breakfast, Lunch & Dinner 7am - 9pm
 Reserv: (07) 3409 8041
- 3** Point Lookout Bowls Club – Open 7 days
 Offers quality and affordable bistro-style meals. Nightly specials available.
 Lunch 12pm – 2pm.
 Dinner 5.30pm – 8pm.
- 4** Tillers – Open 7 days
 Great coffee, yummy breakfasts & lunches.
 Breakfast 7.30am – 12noon.
 Lunch 12noon – 1.30pm Chicken, Fish, Steak.
 Dinner 5pm - 8pm
 Reserv: (07) 3415 0090
- 5** Stradbroke Island Beach Hotel – Open 7 days
 Beer Garden Menu – buzzer service.
 Bistro Menu – Friday & Saturday table service.
 Breakfast 7.30am – 10.30am.
 Lunch 11.30am – 2.00pm Steak, Seafood.
 Dinner 5.30pm – 8pm Steak, Seafood.
 Reserv: (07) 3409 8188
- 6** Fins & Fries
 Fish & chips, burgers and takeaway items.
 Open: Tuesday – Sunday
 Hours: 11.00am – 2.30pm & 4.30pm – 7.30pm.
- 7** Look Cafe Bar – Open 7 days
 Mediteranian style dine in or takeaway.
 Breakfast: 8am - 11am
 Lunch: 11.30am - 3pm.
 Dinner: Thu / Fri / Sat - 6pm - 9pm.
 Reserv: (07) 3415 3390
- 8** 2Dlite – Open 7 days
 Gourmet rolls, salads & sushi.
 Hours: 9.00am – 3.00pm.
- 9** Oceanic Gelati – Open 7 days
 Homemade Gelati & Coffee Bar.
 Hours: 9.30am – 5.00pm.
- 10** Fishes at the Point – Open 7 days
 Dine in or Takeaway. Fresh Local Seafood,
 Burgers, Steak & Snacks. Daily Specials.
 Hours: 7.30am – 9pm.
 Breakfast, Lunch and Dinner.
 Reserv: (07) 3415 3444

GENERAL INFORMATION

- Police** Point Lookout Police Station
 2 Yarrong Road, Point Lookout.
 Ph: 07 3409 8627 or for emergency call **000**
- Medical Centre** Stradbroke Island Medical Centre (Doctors)
 4 Kennedy Drv, Point Lookout
 Open: Monday – Friday 8.30am to 5pm
 Saturday 9am to 11am.
 Sunday 10am to 11am.
 Ph: 07 3409 8660
- Emergency Centre** Marie Rose Medical Centre
(24 hour emergency only)
 Cnr Oxley Parade & Petrie Street, Dunwich
 Open: 7 days 9am to 4pm.
 Ph: 07 3409 9059
- Pharmacy** Point Lookout Pharmacy
 15-17 Mooloomba Rd, Point Lookout
 Open: Monday - Friday 9am to 5pm.
 Saturday 9am to 4pm.
 Sunday 9am to 2pm.
 Ph: 07 3409 8000
- Post Office** Point Lookout Post Office
 Cnr Booran & Gindarra St, Point Lookout
 Open: Monday to Friday 9am to 5pm
 Ph: 07 3409 8210
- Small Supermarket** Point Lookout Food Works
 Shop 1, Endeavour Street, Point Lookout
 Open: 7 days 6.30am to 9.00pm
- Library** Point Lookout Library
 Point Lookout Public Hall, East Coast Road
 Open: Tuesday 10am to 5.30pm
 Wednesday 9am to 1pm
 Friday 1pm to 5pm
- Mobile Phone Coverage** At present the best coverage is obtained
 through Telstra & Optus.
- Atm's** ATM's can be located at the Bowls Club,
 Food Works and the Straddie Pub.



ACTIVITIES

- **Straddie Ocean Snorkeling Tour**
 Head out on our purpose-built NAIAD Rigid inflatable boats to our pristine ocean where you may see Manta Rays (Nov-Apr) Humpback Whales (June-Oct), pods of Dolphins and Endanged Loggerhead Turtles all year round.
 1-2 hours - \$70 pp groups of 4+
 3-4 hours - \$90 pp groups of 4+ (all equipment inc)
 - **Discover Scuba Dive**
 Be adventurous, try scuba diving and find out what it is all about. No qualifications needed.
 \$75 pool session (all equipment inc)
 - **Scuba Diving**
 For the certified divers we offer double dive trips running morning and afternoon.
 \$140 pp (inc tanks and weights)
- Outsourced Activities**
- **Surfing Lessons** - group of 4+
 - **Sandboarding Tour** - groups of 2+
 - **Kayaking Tour** - groups of 2+
 - **4WD 1/2 Day Tours** - groups of 4+
- Prices subject to change at service providers discretion